

## Enterprise Grade Backup 50% Faster 100% Secure

### KEY CAPABILITIES

- Automated and on-demand backups
- Quick and easy data restore and recover with granular search options, including historical snapshots
- Advanced administrative tools and control
- Complete data and status monitoring
- Internationally recognized compliance and security

### KEY BENEFITS

- Minimizes the risk of data loss in the cloud
- Meets audit requirements for backup and recovery with flexibility to select backup times and choice of AWS datacenter locations in the US, Canada, EU, or Australia
- Easy to use with simple, intuitive, non-technical interface to easily activate backups, restore, or export data
- Simple activation of backups to offload IT work by empowering any user to easily protect content and restore lost data

CloudAlly's cloud-to-cloud backup solution for SharePoint Online and OneDrive for Business provides a simple, automated, and secure backup of all your critical business data.

### Maintain Data Control and Work Productivity

So, your company has made the move to SharePoint and OneDrive in pursuit of better collaboration and storage capabilities. That doesn't mean your data is secure. While they are powerful cloud-based tools, they lack the essential ability to recover documents once they've been removed from the trash. Your responsibility to protect your corporate data doesn't change when you use SharePoint Online and OneDrive for Business.

When your data resides outside your organization's boundaries and outside the control of your IT staff, it's a complicated situation. Ultimately you're still responsible for all of your information. As data storage services, SharePoint and OneDrive are not only prone to sync errors, accidental, or malicious data loss, but they're also at risk from malware and ransomware such as CryptoLocker.

Business best practice guidelines require automated backup and recovery for your data, which neither SharePoint or OneDrive provide. When data is deleted from Office 365, it is deleted forever. There's no point-in-time recovery solution, so you could lose access to your intellectual property and waste thousands of man-hours and dollars recovering data that should never have been lost in the first place.

That's where CloudAlly's cloud-to-cloud backup for SharePoint and OneDrive can help.

### OneDrive and SharePoint Data Protection and Recover

CloudAlly offers the most reliable and trusted SaaS application data backup and recovery solution for your IT team. It enables automated daily and on-demand backups, using Amazon S3 secure storage, to ensure that your SharePoint and OneDrive data is safely stored and easily recoverable. And it's effortless.

CloudAlly provides accurate, granular data restoration from any point in time.

Administrators can perform a non-destructive restore or export of your data with a single click, reducing the risk of lost productivity and meeting even the fastest recovery time objectives.

We even offer an in-place restore option for SharePoint, simplifying the data recovery process even further.

With CloudAlly cloud-to-cloud backup for OneDrive and SharePoint, you have full administrative control of your site data. And don't worry about running out of storage space; customers receive unlimited storage and archive retention, so you can be confident that your data can be recovered from any point in time.

### Automated and On-demand Backups

CloudAlly performs automated daily backups—using Amazon S3 secure storage—of all SharePoint and OneDrive sites, sub-sites, and OneNote. And for additional protection, you can make on-demand backups as needed throughout the day.

- **Pause Backups:** CloudAlly's pause function allows you to archive backups when off-boarding employees, keeping the data available for export or restore to another user.
- **Single Repository Backups:** Store your OneDrive, OneNote and SharePoint data in a single repository alongside all your other corporate information including Office 365, Box, G Suite, and Salesforce.

### Fast and Safe Restore

Quickly locate and restore lost data with advanced search and recovery capabilities through CloudAlly.

- **Point-in-time Restores:** Access historical snapshots of all OneDrive and SharePoint sites, and restore with 100% accuracy.
- **Search and Filter:** Use our powerful granular search to quickly locate and recover individual items.

- **Quick Data Navigation:** Browse backups by date snapshot—in chronological sequence—and then drill down through the snapshot to restore or export data at any hierarchical level.
- **Non-Destructive Restore:** With a single click, perform a non-destructive restore that places the backup data on the original site or to another preferred site.
- **SharePoint In-place Restore:** We've simplified the SharePoint data recovery process by giving you the option to do an in-place restore overwriting the live data.
- **Archived Export:** Easily export archived data for local access in zip format, or directly to your own S3, Azure, Box or Dropbox storage. The exported data is in the original formats such as docx, ppt, pdf, etc.

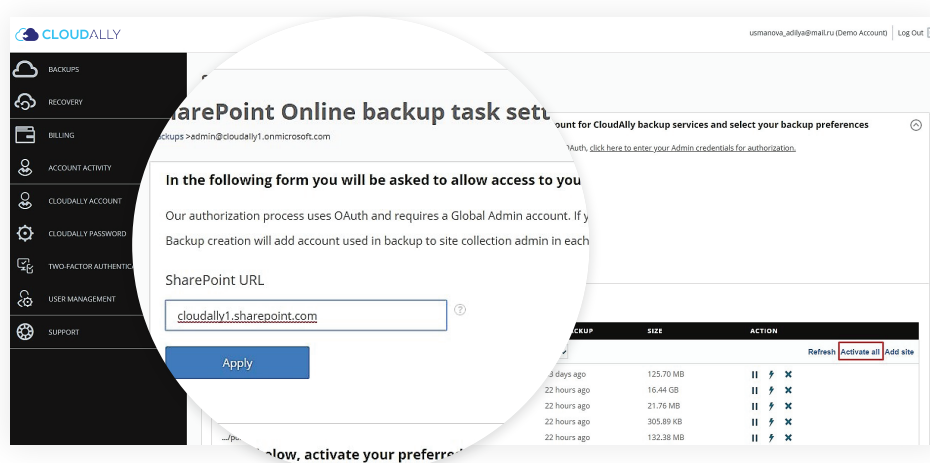
## Advanced Usability

CloudAlly allows OneDrive and SharePoint administrators to customize their cloud-to-cloud backup settings, so you are always in control of your domain.

- **Manage Users:** Manually add, delete, and manage your users and their data backup preferences.
- **Auto Activation:** CloudAlly automatically detects and starts backup tasks for new users and sites added to the system.
- **Complete Compatibility:** CloudAlly is compatible with all Office 365 plans and you can backup SharePoint Site Collections and/or sub-sites, and OneDrive for Business sites.
- **Auto Admin Permission:** We automatically add admin permission to OneDrive sites eliminating the need to run scripts or manually assign permissions to each site.
- **Datacenter Location:** Choose where to store your backups in AWS datacenters in the US, Canada, EU, or Australia, for compliance with local data privacy requirements.

## Complete Transparency

CloudAlly's OneDrive and SharePoint backup service automatically provides administrators with a daily backup email summary. Plus the activity screen shows a full list of all activity within the backup, so that administrators always have full knowledge of their domain.



- **Activity Log:** All activity including login, backups, restores, etc., is logged and available on your CloudAlly account activity screen.
- **Daily Backup Summary:** You will receive a daily backup email summary, or you can select an "exception only report" for notification in the event of a backup failure.

- Optional OAuth and Two-Factor Authentication.
- 99.9% Uptime / Availability SLA.

## Compliance and Security You Can Trust

Trust and transparency are critical to your cloud-to-cloud backup service. We know how critical data protection is to your business, so we've made it our top priority to provide a trustworthy product and service that is reliable, accurate, and transparent. Giving you meaningful insight into your data. Everything we do is focused on giving you piece of mind.

CloudAlly's SharePoint backup is certified, and fully compliant, with internationally recognized accreditation for information security.

- Unlimited storage and unlimited retention of daily backups.
- Non-destructive restores to protect your live data.
- Optional auto-detect and backup of new sites for easy on-boarding.
- Archive backups when off-boarding while still eliminating the OneDrive or SharePoint license.
- Secure Amazon S3 storage with AES-256 bit encryption.
- Client selected backup location in AWS US, Canada, EU, or Australia data-centers.
- ISO 27001 certified, GDPR and HIPAA compliant.



Founded in 2011 as one of the world's first cloud-to-cloud backup services for G Suite and Salesforce, CloudAlly led the industry with the first commercially available Microsoft Office 365 cloud backup in 2014. ISO 27001 certified, GDPR and HIPAA compliant, CloudAlly adheres to industry standard best practices for information security management. CloudAlly is privately held and has customers and partners in over 40 countries.

Visit our Customer Support Hub  
[www.support.cloudally.com](http://www.support.cloudally.com)



partner  
network

ADVANCED TECHNOLOGY PARTNER